

Welcome to Mizunami city Gifu pref JAPAN

Good

Tourist

Guide

MIZUNAMI

Good Guide 瑞浪

TOURIST MIZU NAMI

Discover a fascinating Japan

瑞

M I Z U N A M I

浪

A journey to experience Japanese culture

Gifu Prefecture Mizunami City

Good Guide 瑞浪

Good Tourist Guide MIZUNAMI

ガッ Good ツリ Tourist Guide MIZUNAMI

Explore fascinating Japanese culture!
A trip filled with fantastic memories



CONTENTS

- 03 **☆ What's on** Event Calendar
Seasonal landscapes and events
- 04 **🕒 History**
Visit historical sites and explore the history of the Nakasendo
- 07 **🌿 Nature**
Feel the breeze and replenish yourself in nature
- 08 **🎨 Art & Culture**
An encounter with a thrilling beauty in a pottery town
- 10 **🔬 Science**
Exciting discoveries from the past to the future
- 12 **🎯 Experiences**
Golf, bouldering, motorsports, and more
- 14 **🏠 Accommodation & Hot Springs**
Places to stay and unwind
- 16 **🍴 Gourmet**
☕ Cafés and Sweets
Delicious culinary experiences in Mizunami
- 18 **🛍️ Souvenirs**
Traditional products and new specialties



Symbols ☎ Telephone 📍 Address 🚪 Closed 🕒 Opening hours
 🅅 Parking spaces 🪑 Seats 🏠 Rooms 📶 Wi-Fi 💰 Fees/Admission



Excitement in each season Event Calendar

12 DECEMBER

4 APRIL



A puppet Joruri continuing from the Mid-Edo period (1650-1750)
Hanbara Bunraku Dedication
Sunday closest to the 14th

📍 Hanbara, Hiyoshi-cho (Hiyoshi Shrine)



The dance performed for 300 years in the hope of getting rid of the plague

Fukasawa Lion Dance

Sunday closest to the 15th

📍 Fukasawa in Hiyoshi-cho (Kifune Shrine)



5 MAY

A sight to see. More than 100 carp swimming gracefully in the blue sky!

Koinobori Festival

4th & 5th 📍 Akiyo-cho (Mizunami City Park)



7 JULY

Gorgeous with Japanese drums, accompanied with music by children, and Bon Odori (Bon dance)

Mizukami Gion Festival

3rd or 4th Saturday in alternate years

📍 Mizukami, Sue-cho (Minakami Shrine)



Held at Hachioji Shrine, famous for the Minoyaki guardian dogs

Okawa Gion Festival

3rd or 4th Saturday in alternate years

📍 Okawa, Sue-cho (Hachioji Shrine)



8 AUGUST



Basara's spirit
The power of Mizunami is gathered!

Mizunami Mino Genji Tanabata Festival

Saturday and Sunday closest to the 7th

📍 Terakawado-cho (In front of JR Mizunami Station)



9 SEPTEMBER

One of the three great Ji-Kabuki in Japan

Mino Kabuki Performance

Last Friday and Saturday

📍 Hiyoshi-cho (Aioi-Za)



10 OCTOBER

A float associated with the Owari Tokugawa family goes around the post-town

Shinmei/Hakusan Shrine Annual Festival

1st Sunday 📍 Okute-cho



Lion dance came down from the Koka era (1845-1848)

Shuku-Hakusan Shrine Annual Festival (Shuku-Shishimai)

1st Sunday

📍 Hiyoshi-cho-shuku (Hakusan Shrine)



Floats and dances to pray for good health and a good harvest

Sakanami Shrine Annual Festival (Shuku-Shishimai)

2nd Sunday

📍 Minamigaite, Hiyoshi-cho (Sakanami Shrine)



A dedication kagura that conveys the prayer for rain and the ISE faith

Kakujo Sasa Odori

2nd Sunday

📍 Kakujo, Toki-cho (Suwa Shrine)



Enjoy the performance passed down since the Edo period

Hanbara Bunraku Day

4th Sunday



📍 Hanbara, Hiyoshi-cho (Hanbara Community Center)

11 NOVEMBER

Enjoy buying, seeing, and experiencing

Mizunami Pottery Festival

1st Sunday

📍 Uedaira-cho (Pottery shop "Chawan-ya Mizunami")



Buy and eat to enjoy autumn, the best season for eating!

Mizunami City Agricultural Festival

3rd Sunday



Discover the illuminated waterfall and autumn leaves

View the illuminated Ryu-gin Kyo and autumn leaves



Late November

📍 Kamado-cho (Mizunami Nature Center)



All golf courses in Mizunami City participate, attracting enthusiasts from Mizunami and other cities

Golf town Mizunami, Open Golf Tournament

Enjoy strategic courses surrounded by rich nature

Occasional



A big parade where dancers from all over Japan gather

Mizunami Basara Carnival

Mid December

📍 Terakawado-cho (in front of JR Mizunami Station)



1 JANUARY

Daikokuten is presented to the public and prays for prosperous business

Iwaya Fudo Itsuka Ebisu

5th 📍 Togari, Akiyo-cho (Seiraiji Temple)



The large wooden statue of Daikokuten attracts people's faith

Akiba-gumi Daikokuten Festival

5th

📍 Toki-cho



2 FEBRUARY

The shout with bean throwing is "Oni wa Uchi, Fuku wa Uchi."

Oniwa Fukuoni Festival



1st Sunday 📍 Hiyoshi-cho (Oniwa Drive-in)

Prayers to ward off evil spirits for unlucky year and mochi throwing

Takamatsuyama Kannon-do Festival

3rd Sunday 📍 Nishioda-cho (Takamatsu Kannon-do)



3 MARCH

Fukumairi to pray for business prosperity and family safety

Hatsutama Festival

1st Sunday

📍 Ori, Inatsu-cho (Kaki Inari Shrine)

📍 Terakawado-cho (Meitoku Inari Shrine)



A large collection of delicious and fun things in Mizunami!



Night market to add color to your life. A market essential for life

You can enjoy special products and food that you can only get or taste here, mainly offered by local creators.

Occasional



📍 Togari, Akiyo-cho (Mizunami City Park)

歴史 中山道 Nakasendo

History Thinking about travel in the Edo period, visiting historical sites, and going through the pass

There were two post towns, Okute-shuku and Hosokute-shuku in Mizunami where the Nakasendo Road passes from east to west. There are many historical sites that still tell the story of its history.



中山道

Nakasendo

The route of one of the five highways in the Edo period. It is about 530 km connecting 67 lodgings and 69 post-towns from Edo to Kyoto.

細久手宿

Hosokute-shuku

Footprints of a great history, unchanged for hundreds of years

48th Inn from Edo. Since the distance between Okute-shuku in the east and Mitake-juku in the west was great, people and horses from both towns struggled to make the long journey, so a temporary lodging was established here.



National Registered Tangible Cultural Property

1 Daikokuya

It was the army headquarters of the Bishu family and the hatagoya (inn) continues to this day. The current building is over 160 years old, and there are plenty of highlights in the design that retain the appearance of the past.



☎ 0572-69-2518



2 Hiyoshiya

A merchant house built in Ansei 6 (1859). A valuable private house where the original lattice doors remain.

※ This house is not open to the public.



Recommend

Explore the four Ichirizuka of Mizunami

In Mizunami, four consecutive milestones remain in their original state. Why don't you go past each one and think back to the journey in olden times.



一里塚 Ichirizuka

The mound is built by piling soil on the road every 1 ri (3.927 km). Celtis sinensis and pine trees were planted, and it became a milestone for travelers. A milestone.



3 Hosokute Ana Kannon (Bato-Kannon)

It is said that there will be 99,000 blessings if you visit it once.



4 Hosokute-shuku painted by Hiroshige Utagawa



The scenery looking down the hill is the same as it was at that time



5 Koshindo (Stone Buddha)

This is known as "Hosokute Koshin-sama" and many old stone Buddhas remain.



6 Hiyoshi, Atago Shrine

Founded in Bunroku 4 (1595). There is the oldest stone lantern in Hosokute.



7 Konosu Ichirizuka

Located near the border with Mitake-cho and shows 93 ri to Edo and 41 ri to Kyoto.



8 Okunota Ichirizuka

92 ri to Edo and 42 ri to Kyoto. It remains almost intact.



9 Yasezawa Ichirizuka

91 ri to Edo and 43 ri to Kyoto. Located on the way down the Biwa Pass.



10 Gongen-yama Ichirizuka

90 ri to Edo and 44 ri to Kyoto. Located at the difficult point of the Nakasendo, the Jusan-toge Pass.

大湫宿

Okute-shuku

The highest post-town in Mino Province

47th Inn from Edo. At 510 meters above sea level, it is the highest post-town in Mino Province. There are many steep slopes in the vicinity. The townscape of the past remains centered on the large cedar of Shinmei Shrine.

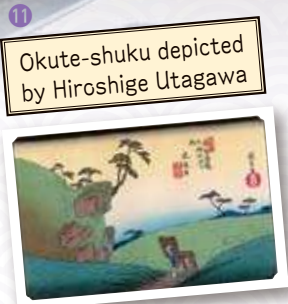


National Registered Tangible Cultural Property

12 Main house of Noriyuki Morikawa residence

The building used to be a Hatagoya (inn) and a wholesaler. Currently, the Nakasendo Tourist Information Center.

☎ 0572-63-2455 📅 December 28 to January 4
🕒 9:00 to 17:00 🆓 Admission free
👤 Nakasendo volunteer guide (reservation required)



Okute-shuku depicted by Hiroshige Utagawa



13 Okute Kannon-do Hall

Rebuilt in Koka 4 (1847). On the ceiling, you can see flowers, birds, and plants painted at that time.



14 Remains of Kosatsuba in Okute-shuku

A reproduction of the Kosatsuba that used to be located at the western end of the Inn.



15 Okute Community Center

Materials of Okute-shuku are on display. Feel free to take a break.

☎ 0572-63-2360 📅 Sat, Sun, national holidays, winter recess
🕒 8:30 to 17:15 🅐 10 cars



16 Waki-Honjin (secondary inn)

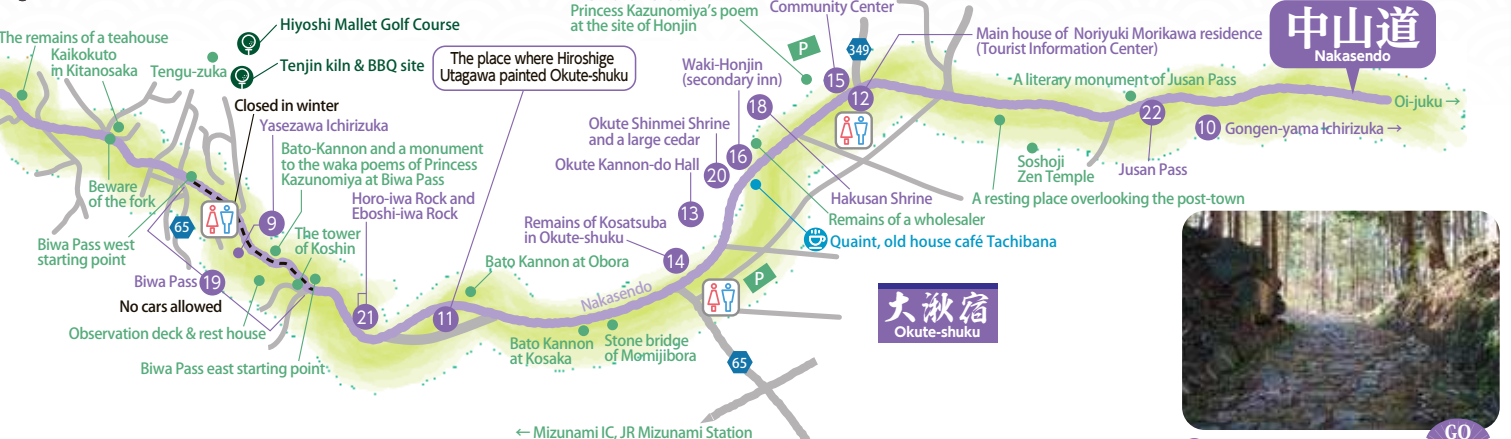
Built in the Mid-Edo period, the original appearance is well preserved.

※This house is not open to the public.

National Registered Tangible Cultural Property



Hiroshige Utagawa
A famous Ukiyo-e artist of the Edo period, his works 53 Stations of the Tokaido, and 69 Stations of the Kisokaido depicted post-towns along the Nakasendo.



17 Benzaiten Pond (Benten Pond)

A pond located between Hosokute-shuku and Okute-shuku. Benten-sama is enshrined on the small island.



Café Seigaiso

☎ 0572-63-3010 📍 221-159 Okute-cho
📅 Tue & Wed
🕒 Sat & Sun 11:00 to 16:30
Mon, Thu & Fri 11:00 to 16:00
🅐 20 cars 🕒 30 seats

※Minimum age 12 (junior high school students or older).



Quaint, old house café Tachibana

☎ 090-4867-1726 📍 463-1 Okute-cho
📅 Tue, Wed, & Thurs (reservations required on Mon. Closed from Dec. to mid-Mar.)
🕒 11:30 to 16:00 (Last order 15:30)
🅐 15 cars 🕒 20 seats 📶 Available



National Registered Tangible Cultural Property



18 Hakusan Shrine

The remains of a cedar tree, taller than that of Shinmei Shrine, can still be seen today.



19 Biwa Pass

A famous spot on Nakasendo with beautiful green trees and stone pavement. A very popular photo spot.

※There are car-free sections.



20 A large cedar tree at Okute Shinmei Shrine

A part of the sacred cedar tree that fell in the heavy rain of 2020 has been preserved in the precinct by local residents.



21 Horo-iwa Rock and Eboshi-iwa Rock

The rock in the east is Horo-iwa Rock (Female Rock) and the rock in the west is Eboshi-iwa Rock (Male Rock).



歴史

Visit Historic Remains

Follow the **footsteps** of **hi story** that has not changed
 Historical sites that have remained for hundreds of years since the Heian period (794-1185). Feel the eternal flow of time.

史

A venerable temple celebrating its 1,200th anniversary



Lotus flowers

Sango (mountain name)
Zuiouzan

Sakurado Yakushi

A venerable temple with a history of more than 1,200 years, said to have opened in Kojin 3 (812). You will be welcomed by amazing weeping cherry blossom in spring and Lotus flowers in summer

📍 5278 Toki-cho
 🅐 Available



Weeping cherry blossom



Sakurado Yakushi in the east, Takamatsu Kannon in the west



Takamatsuyama
Kannon-do

Takamatsu Kannon

It enshrines Bato Kanzeon Bosatsu, which is said to be an engraving of Gyoki Bosatsu.

📍 4-51 Nishi-oda-cho



Kaigen-in Temple

Founded in Eikyo 11 (1439) for the guardian temple of the Toki clan.

📍 8846 Hiyoshi-cho
 🅐 Available



Tanaka Doro Yakushi

There is a legend that if you apply mud to your area of sickness, you will be cured.

📍 4-chome, Yakushi-cho



Tenyu-ji Temple

Known as Tsubaki (camellia) Temple. Many people visit during the flowering season.

📍 1517-1 Kamado-cho
 🅐 Available



Ryuozan Eight Great Ryuojin Isshin-in Temple

Enshrines the Ryuozan Eight Great Ryuojin, which have been worshipped since ancient times as the gods of wells and agriculture.

📍 331 Minakami Sue-cho
 🅐 Available



Ori Castle site

Built around Tenbun 1 (1532). The base of the Oda clan during the Sengoku period (Warring States period), and the base of the Ori clan during the Edo period.

📍 Ori, Inatsu-cho
 🅐 Available



A place associated with Mitsuhide Akechi

The legend of Mitsuhide is to be found in various places in Mizunami. There are many historical sites that still tell the story.

Mitsuhide Akechi

A busho (Japanese military commander) of the Sengoku period who was active as a vassal of Nobunaga Oda. He was from the Toki family of Mino-Genji (Minamoto clan), and the legends are found in parts of Mizunami.

明智光秀



Hitoichiba Hachiman Shrine

The birthplace of the Mino Genji (Minamoto clan) and the Toki clan, and the place where the residence called "Hitoichiba-kan" was built.

📍 402 Toki-cho



Prefectural Designated Cultural Property

Tsurugajyou Castle site

The mountain castle of the Toki clan. Nobunaga and Mitsuhide Akechi visited here during the conquest of Takeda in Tencho 10 (1582).

📍 2659-3 Toki-cho



Castle seals, Ruins of Tsurugajyou Castle and Kouno Castle

A unique castle seal where one Kikyo family crest is completed by two pieces. There are letters with three different colors: black, gold, and silver.





自然

Nature

River is murmuring, birds are singing

Walk through the **four seasons** of forest with the harmony of **water, greenery, and climate**

A lush green forest that extends from Ryugin seven waterfalls to Ryu-gin Lake

Superb views created by huge and mysterious rocks, majestic waterfalls, and unpretentious landscapes of the local forest.

Discover the scenery unique to Mizunami, created by the topography and climate.

Ryugin no Mori (Ryugin Gorge)

There are seven large and small waterfalls and trails, such as the Shichitaki-no-komichi and Seseragi-no-komichi that surround Ryu-gin Lake. Take a stroll while enjoying the magnificent waterfalls and the nature of the four seasons.



📍 1069-307 Kamado-cho (Mizunami Nature Center) 📄 Available

A place with a superb view of the great valley of the Kisogawa

Superb view

Beauty of nature in the four seasons



Tengu-zuka

See the great valley of the Kisogawa, 300 m from the roadway, at the top behold a stunning view of the Central Alps, Mt. Ontake, Mt. Hakusan, and Ise Bay in the distance.



📍 Hiyoshi-cho 📄 Available

天狗 Tengu

A specter that lives in the heavens and deep mountains. It has a red face with a big nose, and flies freely with wings, holding a feather fan in its hand.



Trailhead



Sea of clouds

Mizunami's highest peak, a popular trail for beginners



Mt. Byoubuzan

The highest mountain in Mizunami with an altitude of 794.1 meters, located on the border with Ena City. The mountain range looks like a folding screen, and the trail is well maintained.



Okusa trailhead



📍 8427 Toki-cho, Okusa trailhead parking lot 📄 Available



Dragon 21

Dragon

An imaginary beast resembling a Western dragon. An auspicious creature that lives in ponds and marshes and flies into the sky to make rain.



Viewing of illuminated autumn leaves (late November)

Stroll through the huge rocks, monstrous rocks, rock houses, and Itto-iwa rocks related to the Oni legend

Strange rocks

National Place of Scenic Beauty
National Special Natural Monuments



Oniwa Park

A corner of the Hida Kisogawa Quasi-National Park. Enjoy nature, such as cherry blossoms, azaleas, autumn leaves, and clear streams along with huge rocks, mysterious rocks, and the popular Oni no Itto Iwa. There is a guided tour where you can explore the rock holes in the park.

📍 9499-2 Hiyoshi-cho 📄 Available

Oni no litto Iwa

鬼 Oni

An imaginary monster that harms humans. A human-shaped monster with horns and fangs, strong, brave, ruthless, and frightening.



A natural paradise, halfway up Mt. Byoubuzan.



Kuro-no-ta East Wetlands

Wetlands located southeastern flank of Mt. Byoubuzan, halfway up the trail for an hour and a half. The largest area in the Tono Wetland Group, where you can observe various ecosystems.

📍 Inatsu-cho





Art & Culture

文化・芸術

Techniques and beauty passed down to the next generation, Visit a unique **treasure**

Pottery has been made for more than 500 years. Kabuki and bunraku have been handed down since the Edo period.

The beauty and culture unique to Mizunami are alive here and there.



Prefectural Important Intangible Folk Culture Asset

Hanbara Bunraku

Hanbara puppet Joruri (Hanbara Bunraku) was originally introduced by a puppeteer from Awaji introduced to the villagers in Hoei (1704 ~) in the Mid-Edo period.

文楽 Bunraku

Always a traditional performing art since the Edo period in which the narrator, the shamisen player, and the puppeteer work together as one.

Mino Kabuki Museum Aioi-Za

A small theater from the Meiji period was relocated and restored. See the stage mechanism and kabuki costumes.

☎ 0572-68-0205 📍 8004-25 Hiyoshi-cho
🕒 Mon, Irregular closing
🕒 10:00 to 16:00 (Reservation required)
🚗 20 cars 🏠 300 Yen



歌舞伎 Kabuki

Kabuki

Traditional play that began in the Edo period (1603-1868). It was introduced to rural areas through the Nakasendo and was loved by the people as Ji-Kabuki.

Tradition



Discover Mizunami's art!



Mizunami Art Center

A gallery in a relocated thatched house. Various exhibitions and lectures are held.



☎ 0572-66-2170
📍 1220-2 Hagiwara, Inatsu-cho
🕒 Changes depending on the event (see Website or Instagram)
🚗 Available



Nakasendo Museum

A large number of Japanese art works are on display, including materials on Ji-Kabuki, and armor. Original baked sweets are popular.



☎ 0572-68-0505
📍 331-1 Togari, Akiyo-cho
🕒 Mon 9:00 to 17:00
🚗 70 cars 🏠 300 yen



Hirota Ichinose Memorial Art Museum

Exhibiting the works by the late sculptor, Hirota Ichinose, and other artists related to Mizunami.



☎ 0572-68-9400
📍 2-17 Togari, Akiyo-cho
🕒 Monday and the day after a national holiday
🕒 9:00 to 17:00
🚗 30 cars 📶 Available 🏠 200 yen



Mizunami Ceramics Museum

A museum that answers simple questions about pottery, such as how to make pottery and the difference between pottery and porcelain.



☎ 0572-67-2506
📍 1-6, Yamanouchi, Akiyo-cho
🕒 Monday and the day after a national holiday
🕒 9:00 to 17:00
🚗 30 cars 📶 Available 🏠 200 yen

陶芸

Pottery

Mizunami, a pottery town making the best pottery in the world

3.3m high.

1999
Listed in the Guinness
World Records

Kato Saemon no jo Kagenobu opened a kiln in 1475, which is the beginning of the pottery town of Mizunami. Among Minoyaki, Mizunami ware boasts world-class design and high quality.



狛犬 Komainu, Guardian Dog
An imaginary beast resembling a lion. Placed at the entrance of shrines and temples representing exorcism and guarding the gods.



Minoyaki guardian dogs

Height 3.3 m, used 15 tons of clay. The largest Minoyaki guardian dogs in the world.



Produced by 12,000 people.



2000
Listed in the Guinness
World Records

Art



Tea container "Hojo no Tsubo"

Height 5.4 m, diameter 4 m, and used 32 tons of clay. Produced by 12,000 people. Certified as the world's best integrally molded pottery.

📍 Hachioji Shrine at Okawa, Sue-cho
🅑 Parking (five-minute walk)



Large plate "Zuicho"

A large plate with a diameter of 2.8 m and weighing 1.2 tons, it was fired for a week by local people. It was registered in the Guinness Book of Records as the world's largest plate from 2000 to 2010.

📍 560-2, Ori, Inatsu-cho 🅑 Available



Japanese Cuisine

The only place to enjoy a relaxing and special space where time seems to have stopped.

Japanese cuisine Kingyo

A quaint Japan restaurant in a renovated 110-year-old Japanese mansion, surrounded by trees. Enjoy a luxurious time with a beautiful garden view and delicate cuisine.

☎ 0572-65-2540 📍 140-5 Mashizume, Sue-cho
🕒 Wed., 2nd & 4th Tue.
🕒 11:30 to 14:00 and 17:30 to 21:30 (weekends 18:00 to 21:30)
🅑 20 cars 🅑 30 seats



Recommend

Create your own original!

At the pottery and paint workshop, create one-of-a-kind works in the world.

Experience painting!



Sue Yozaemon's Kiln

A climbing kiln built in 2005. Fired once a year in autumn. You can also experience making pottery at the adjacent workshop.

☎ 0572-65-3776 📍 786-1 Sue-cho 🕒 Irregular closing
🅑 Reservation required 🅑 Available



Pick up



SUELABO

"I want to deliver instruments that beginners and children can play with peace of mind." Minoyaki musical instrument workshop such as Ocarina & Seralina for beginners.

☎ 0572-65-2944 📍 48-12 Mashizume, Sue-cho
🕒 Sat, Sun, and holidays (subject to change by reservation)
🅑 Reservation required 🅑 Available



Pick up



The local experiences are here



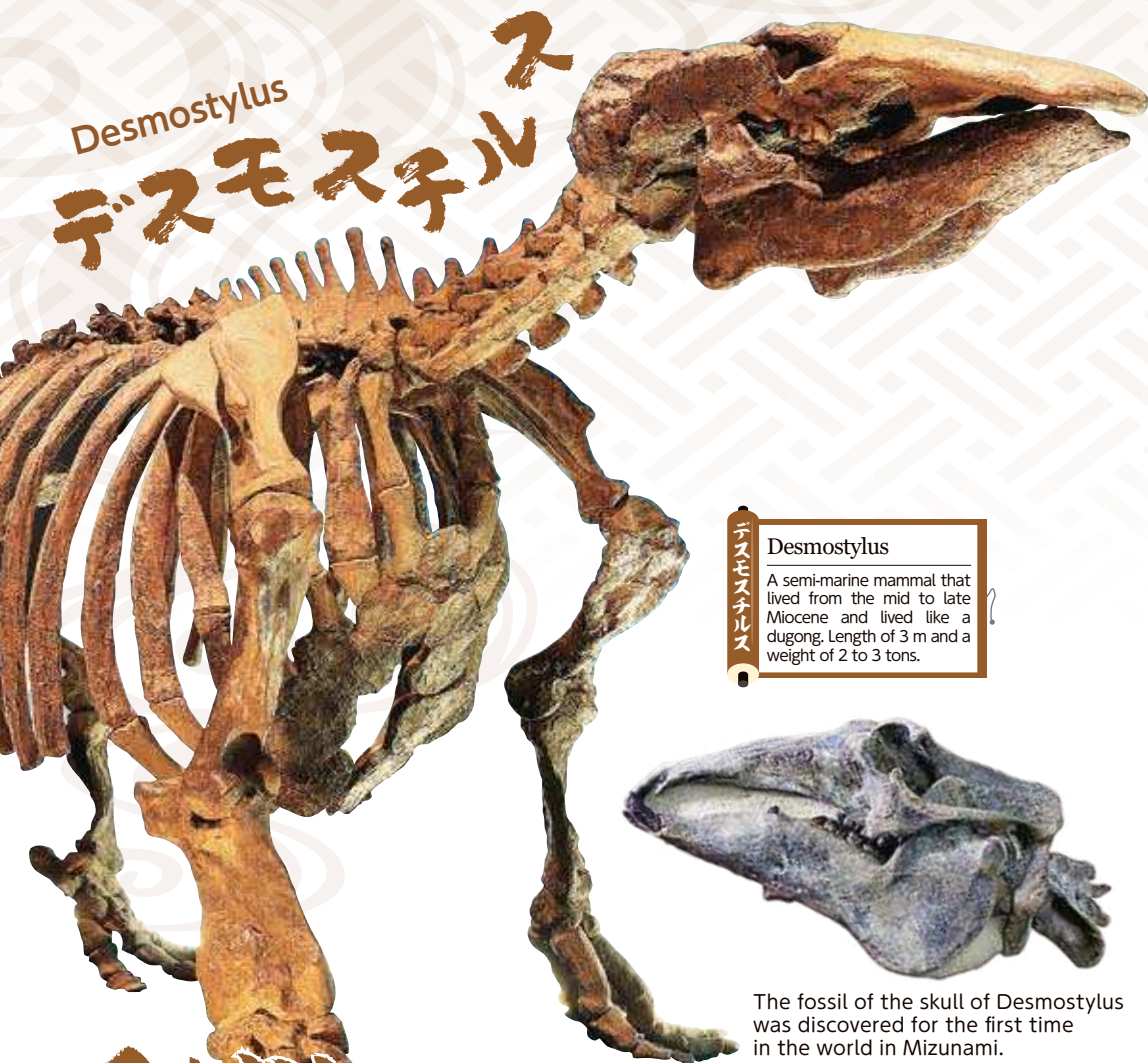


科学

Science

Exciting time travel
from ancient times to the future!

Mizunami, which was under the sea thousands of years ago, is known as the fossil town.
Enjoy a fun knowledge time to learn about the past and future of the earth.



Desmostylus
デスモステルス

Desmostylus
A semi-marine mammal that lived from the mid to late Miocene and lived like a dugong. Length of 3 m and a weight of 2 to 3 tons.



The fossil of the skull of Desmostylus was discovered for the first time in the world in Mizunami.

化石

Rare fossils still



Whale fossils
A whale fossil discovered in 2017 at the construction site of a junior high school in Mizunami.



科学

Science

Lots of experiments and experiences!
Learning science is fun



Gifu Advanced Science and Technology Experience Center "Science World"

A science museum that specializes in experiences, which is rare in Japan. There are many experiments and craft workshops in addition to the participatory science experiment show. Children and adults alike can have fun and experience the wonders and splendor of science.

☎0572-66-1151 📍54 Togari, Akiyo-cho
🕒 Monday, the day after a national holiday, winter recess
🕒 9:00 to 17:00
🚗 60 cars 🎫 Admission is free, some workshops are chargeable





石

Fossil

found



A fossil bunker
A lot of shellfish fossils are in the ceilings and walls!

Fossil Museum

A museum specializing in fossils. More than 250,000 fossils are stored. Some of them (about 3,000) are displayed. Learn about the time when Mizunami was a lake and sea.

☎ 0572-68-7710 📍 91-47 Akiyo-cho
🗓 Monday and the day after a national holiday
🕒 9:00 to 17:00
🚗 30 cars 📶 Available 💰 200 yen



パレオパラドキシア

Paleoparadoxia



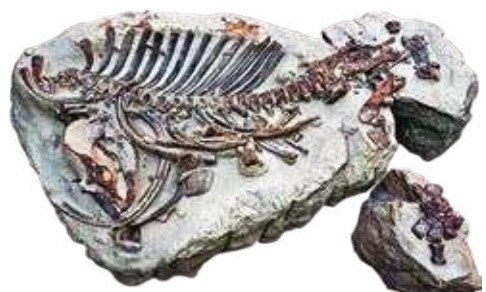
Fossil Museum mascot
Mizunami Mio

She is a girl who loves fossils and tells people about Mizunami's culture and fossils.

The near-complete whole body skeleton was on the riverbank!

In June 2022, the Fossil Museum received news from local residents that there was something that looked like a fossil on the riverside. The curator headed to the riverbank of the Tokigawa, half doubtful, and found a splendid spine! The fossil found was a full skeleton of Paleoparadoxia, a mysterious beast in excellent condition.

Paleoparadoxia
A mammal that is thought to have lived at the same time as Desmostylus. It had bizarre back teeth that looked like a bundle of columns, large pectoral bones, and sturdy limbs.



Paleoparadoxia replicas are on display in the exhibition room.



Recommend

The Fossil Collection Challenge!

In Mizunami, there is a free fossil collection site, which is rare in Japan. Prepare the tools and go to the field study site!



Field study site

On the riverbed of the Tokigawa 1.2 km south of the Fossil Museum, you can find strata containing fossils of shellfish and plants dating from 17 million years ago. Since fossils can be observed and collected in this field, it is used as a place for elementary and junior high school field trips and hands-on learning for parents and children.

☎ 0572-68-7710
🗓 Monday, the day after a national holiday, when the river floods because of bad weather
🕒 9:00 to 16:00 (last entry at 15:00)
🚗 30 cars

How to Collect Apply to the Fossil Museum.

- ※Notify the Fossil Museum reception desk when you visit.
- ※Collection is not allowed when the Fossil Museum is closed.

There is no equipment rental. Please bring your own tools. (Hammer, chisel, etc.)



After learning, a picnic on the lawn!



Mizunami City Park

The Fossil Museum and the Ceramics Museum are gathered here. There is also playground equipment such as a slide and a spacious lawn often crowded with picnickers.

☎ 0572-68-2111 (ext. 247) 📶 Available



遊

Experiences

Mizunami has many leisure spots to enjoy outdoors. Let's move your body to the fullest in the rich nature!

Climbing and golfing, have an active day!

Family leisure

Experience activities in a rural landscape using the five senses

Mizunami has plenty of activities to enjoy with the family, such as bouldering, full-fledged kart racing experiences, BBQ, and casual family golf. Now, what shall we all do today?

A climbing wall is in the building



Log house in Ryugin Forest! Mizunami Nature Center

A log house that anyone can drop in, feel free. Ryugin Forest exhibition, and lectures including plant dyeing are held.

- ☎ 0572-63-0015
- 📍 1069-307 Kamado-cho
- 📅 Monday, the day after a national holiday, winter recess
- 🕒 9:00 to 17:00
- 🅐 Available



Ryugin-iwa Rock Climbing Site

With a height of 35 m for beginners and intermediate climbers. Exciting climbing experience. Right next to the Mizunami Nature Center



Rock climbing



Forest Park

Experience the authentic Racing Kart!



Festika Circuit Mizunami

Rental carts are available in a full-fledged racing circuit facility. Enjoy the racing experience with family and friends.

- ☎ 0572-63-3178
- 📍 1064-118 Kamado-cho
- 📞 Contact us
- 🕒 9:00 to 17:00 🅐 300 cars



Recommend

Fishing & Camping Site Mizunami



Managed fishing spot specializing in lure. There is also a campground and BBQ area. Even beginners can experience fishing for half a day without any fishing gear.

- ☎ 0572-63-1113 📍 107-1 Okute-cho
- 📅 Open all year round (with summer holidays)
- 🕒 7:45 to 16:30 (closed at 17:00) 🅐 Available





Golf town
Mizunami



13 Golf Clubs in Mizunami

Let's play golf!

Mizunami is the "City of Golf." There are beautiful courses that take advantage of the terrain in the hilly area with magnificent panoramic views of the Central Alps.



Visit Golf Town Mizunami



Akiyo Country Club

Strategic courses surrounded by rich nature. The meals are seasonal and change monthly.

☎ 0572-69-2326
📍 1112-88 Tsukiyoshi, Akiyo-cho



Hananoki Golf Club

The bright and airy dining room overlooking the 18th hole is popular. Appreciate the specialties of the head chef.

☎ 0572-68-9111
📍 8675-1 Hiyoshi-cho



Hiyoshi Highland Club

At an altitude of about 500 m, this forest course takes advantage of the natural terrain. Meals with local ingredients are very popular.

☎ 0572-69-2126
📍 8004-25 Hiyoshi-cho



Bellflower Country Club

A variety of courses that make it possible to use all 14 clubs.

☎ 0572-64-2222
📍 8671-1 Hiyoshi-cho



Daily Mizunami Country Club

One of the best strategic courses in Gifu Pref. You can also stay overnight and play golf.

☎ 0572-63-1001
📍 1069 Kamado-cho



Nakasendo Golf Club

The famous long 9th hole is attractive for its dynamism. A wide selection of meals.

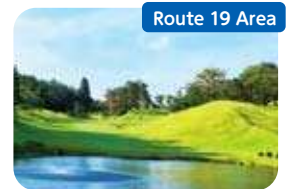
☎ 0572-63-3111
📍 621-1 Okute-cho



Forest Mizunami Country Club

A course structure that has a peaceful beauty and a strategic interest. You can just visit the restaurant.

☎ 0572-63-3131
📍 4605 Kamado-cho



Reitaku Mizunami Golf Club

A full-scale competition course that accepts federation competitions.

☎ 0572-68-2126
📍 4858-4 Toki-cho



Crown Country Club

The wide fairways allow you to enjoy spectacular shots. Comfortably move with a center cart.

☎ 0572-65-3939
📍 1030 Mashizume, Sue-cho



Green Hill Mizunami Golf Club

Thanks to the latest system, you can play comfortably all day long. The gourmet fare is also popular.

☎ 0572-68-1212
📍 2722 Ori, Inatsu-cho



GOLF5 Country Mizunami Course

The course features a wide fairway blending with nature. There are cottages for accommodation.

☎ 0572-63-3800
📍 2383-1 Kamado-cho



Zuiryo Golf Club

The course is characterized by beautiful scenery and high strategy. The restaurant is open for breakfast, lunch, and dinner meetings.

☎ 0572-68-8888
📍 8263-31 Toki-cho



Tono Country Club

The courses feature a unique structure rich in strategy. Japanese, Western, and Chinese cuisine are offered.

☎ 0572-65-4111
📍 830 Minakami Sue-cho





stay 宿と温泉 泉

Accommodation & Hot Springs

Enjoy a relaxing time at a hideaway inn Hot Springs

From a long-established inn founded 120 years ago to inns with alkaline salt or radium springs, as well as inns with pride in their cooking. Unwind with warm hospitality.

Natural hot spring



The luxury of relaxing at an inn.



温泉の作法

Etiquette for hot spring

Take off all your clothes in the changing room. Before entering the tub, be sure to wash your whole body in the washing area to remove dirt.

Oniwa Hot spring

A natural radium spring that gushes out from a stratum before the Cretaceous period (85 million years ago) with a legendary white egret.



Accommodation Day visit Hot spring

Japanese cuisine and inn Iwamitei

A radium hot spring that can be drunk. Experience a nostalgic healing journey. Available just for bathing or dining. (Reservation is required for both overnight or day visits)



Day trip bathing Weekdays 11:00 to 17:00; Sat, Sun, Holidays 11:00 to 15:00

☎ 0574-67-3101 ♡ 9500-5 Hiyoshi-cho
🚗 Irregular closing 🅇 20 cars
🏠 10 Japanese rooms 📶 Available

Accommodation Day visit Hot spring

Ryo-zan

The large public bath Gessen is a safe, barrier-free, healthy radium hot spring. Delicious Kyoto style kaiseki cuisine that makes use of local ingredients. You can visit just for bathing in the hot spring.



Day trip bathing Weekdays 11:00 to 14:00

☎ 0574-67-0288
♡ 3420-7 Shizuki, Mitake-cho, Kani-gun
🅇 60 cars
🏠 8 Japanese rooms, 6 rooms with outdoor baths, 3 special rooms, 3 beauty spa rooms
📶 Available



Nakasendo Hosokute-shuku

The only inn open since the Edo period welcomes you with seasonal food from the mountains and the river.



Stay always for a stroll on the Nakasendo



Accommodation
Japanese inn

Daikokuya

National Registered Tangible Cultural Property



In Hosokute-shuku, a hatagoya (inn) built over 160 years ago and was the army headquarters of the Bishu clan. It is preserved in its original condition and welcomes travelers walking along the Nakasendo. You can visit just for the restaurant.

☎ 0572-69-2518 📍 7905-1 Hiyoshi-cho
🚗 Irregular closing 🅇 6 cars
🏠 7 Japanese rooms

Byakko Hot spring

Inari Hot spring

Opened in October 2022!



The local experiences are here



Accommodation Day visit Hot spring GO

Imaiya, Day visit hot spring Hinata

Relax in the large public bath with weak alkaline salt spring and radium spring. A very famous spring with a history of more than 300 years. You can reserve for private bathing.

Day trip bathing 9:00 to 22:00 (Reservation required)

☎ 0572-63-2013 📍 820 Kamado-cho
🚗 Irregular closing 🅇 20 cars
🏠 6 Japanese rooms 📶 Available

Refurbished in October 2023!



Day visit Hot spring

Inari Hot spring, Qigong Bath®

A small hot spring hidden in the precincts of Inari in Ori. Appreciate free-flowing natural radium spring with a wood fire burning.

Day trip bathing 12:00 to 20:00

☎ 0572-68-3214 📍 555 Ori, Inatsu-cho
🚗 Wed 🅇 15 cars



Glamping

Local forest glamping to experience the great, ancient Japanese nature



Accommodation

Satoyama glamping Musubi

Relax in a glamping tent with your loved one or your dog as if in your own villa. Go to the fishing pond and try making bamboo tableware.

☎ 0572-51-5661 📍 3768 Hiyoshi-cho 🚗 Irregular closing 🅇 20 cars



Bed & Breakfast

A casual hotel that is close to the IC and the train station Recommended for those who value access.

Business Hotel



Mizunami Plaza Hotel

☎ 0572-68-5100 📍 62-1, Yamanouchi, Akiyo-cho
🚗 20 cars
🏠 40 Single rooms, 2 Twin rooms, 3 Japanese rooms

Immediately after the exit from Mizunami IC. The tranquil reception and lobby, decorated with natural stones, and comfortable rooms welcome visitors to Mizunami.



Lion Prince Hotel

☎ 0572-67-1241 📍 955-8 Terakawado-cho
🚗 20 cars
🏠 36 Single rooms, 9 Twin rooms
📶 Available

Conveniently located just a three-minute walk from Mizunami Station. Functional facilities will make you feel comfortable. The omelet breakfast using Mino Genji eggs from Mizunami is popular.



Open in mid-April 2025

Suigetsukan

☎ 0572-56-7991 📍 1-13 Matsugase-cho Mizunami
🚗 10 cars
🏠 10 Twin rooms

Located about 400m from Mizunami Station. Simple containerized lodging. Coin-operated laundry, vending machine, EV stand, breakfast included.



大食事

Treat yourself with some fine dining at long-established restaurants and hot spots.

A huge range of Mizunami dishes on offer.

☀ Breakfast to 11:00 ☀ Lunch & meals 11:00 to 18:00 🌙 Dinner from 18:00 ☕ Café 📦 Take out



Ramen

Akintei Mizunami main shop

Noodles, grilled pork, and blended soy sauce soup are all homemade. A specialty ramen.



☎ 0572-68-8123 📍 1266-1, Ori, Inatsu-cho
📅 Mon (Unless a national holiday, closed Tuesday)
🕒 11:00 to 21:00 (Last Order 20:30)
📊 26 cars 🍽 52 seats 📶 Available



Japanese

Kadoya Eatery

Famous for its ankake katsudon in which the umami of the dashi is superb. An old-fashioned, earthy taste.



☎ 0572-68-6121 📍 1144-6 Terakawado-cho
📅 Thu, 2nd Wed
🕒 11:00 to 14:30 and 17:00 to 19:00
📊 3 cars 🍽 64 seats



Japanese & Western

Miwaya head restaurant

The original menu of Gyu Mabushi (registered trademark) using Hida beef is popular.



☎ 0572-68-3388 📍 3368-3 Toki-cho
📅 Tue, 3rd Mon & irregular closing
🕒 11:00 to 15:00 (Last Order 14:30) and 17:00 to 20:30 (Last Order 19:30)
📊 30 cars 🍽 200 seats



Japanese Cuisine

Japanese cuisine Hiyoshiya

A Japanese restaurant, with the ambience of the Basara spirit, is particular about the beautiful and delicious Mino taste.



☎ 0572-68-2331 📍 1141-4 Terakawado-cho
📅 Irregular closing 📞 Reservation only
📊 12 cars 🍽 100 seats 📶 Available



Udon & Japanese

Kamano

A wide variety of foods. Udon, omelet rice, and snacks. The signature menu is miso stewed udon.



☎ 0572-68-1766 📍 6082-1 Toki-cho
📅 Wed evening 🕒 11:00 to 15:00 (Last order 14:30); Weekdays 17:00 to 20:30 (Last Order 20:00); Sat, Sun, holidays 17:00 to 21:00 (Last Order 20:30)
📊 40 cars 🍽 90 seats



Japanese & Western

Original Dish Riku

Original dishes made with seasonal ingredients are served with delicious sake. Order the very popular spring onion and miso pizza for takeout.

☎ 0572-68-5133 📍 1-36 Honami
📅 Sun, 3rd Mon
🕒 11:00 to 14:00 (Last Order 13:30) and 17:30 to 22:00 (Last Order 21:30)
📊 18 cars 🍽 30 seats 📶 Available



Japanese

Kappo Kazuyoshi

Shokado Bento and set menu for lunch and seasonal kaiseki cuisines for dinner are offered. Appetizers and bento (reservation required) are also offered.

☎ 0572-67-3566 📍 4-11-2 Uedaira-cho
📅 Mon
🕒 11:30 to 14:00 and 17:30 to 22:00
📊 14 cars 🍽 30 seats



Japanese

Washoku-dokoro Nao

The classic set menu that includes sashimi and fried foods, and the gorgeous seafood rice bowl are popular.

☎ 0572-68-2829 📍 546 Akiyo-cho
📅 Wed
🕒 11:00 to 14:00 and 17:00 to 21:00
📊 15 cars 🍽 60 seats

Recommend

Taste Mizunami Buono Pork!

Why don't you eat Mizunami's speciality pork. How would you like to eat pork?

Just pop in! Pet friendly tables are available!



What is Mizunami Buono Pork 瑞浪ポーク

Mizunami brand pork is twice as marbled as ordinary pork. It is a branded pork with a strong flavor and the sweetness of fat. Taste Mizunami Buono Pork dishes that make use of the skills and individuality of each restaurant in Mizunami.



Kinahta Mizunami BBQ Field

A BBQ field without having to bring anything. Enjoy a luxurious BBQ with Mizunami Buono pork, Hida beef, and Okumino kojidoru.

☎ 050-3187-8655 📍 6059 Toki-cho 📅 Tue
🕒 Weekdays 11:00 to 16:00; Sat, Sun, national holidays 10:00 to 13:00 and 14:00 to 17:00
📊 Available



Book now!



Cafés and Sweets

喫茶・甘味

A moment of joy and relaxation.

喫茶

Mizunami has many unique cafés. Choose a café for the day to enjoy a specialty coffee, homemade sweets, or its excellent location.

Breakfast to 11:00 Lunch & meals 11:00 to 18:00 Dinner from 18:00 Café Take out

Take a break at a stylish coffee shop



Café Gallery

The murmur of the stream, singing of the birds. A healing time in the forest.

Ryo-an



☎ 0574-68-2208 📍 9502-1 Hiyoshi-cho
 Mon, Tue 🕒 9:30 to 17:00
 P 25 cars 🪑 40 seats
*Children aged 7 years and younger and pets are not allowed.



Café Gallery

A gallery for handmade crafts and art works by local creators is included.

Designer café ao café



☎ 0572-44-8544 📍 958-2 Toki-cho
 Sun, Mon
🕒 8:00 to 11:00 and 11:30 to 17:00
 P 6 cars 🪑 17 seats



Café

Taste Sri Lankan and Indian black tea selected by the owner in a stylish and calm shop.

Tea specialty store Linden



☎ 0572-67-1761 📍 2-60, Yakushi-cho
 Fri (open on national holiday)
🕒 9:30 to 18:00
 P 7 cars 🪑 28 seats 📶 Available



Café

The owner's carefully selected coffee from all over the world.

Taimu coffee shop



☎ 0572-68-7516 📍 4-48-3 Isshiki-cho
 Tue & Wed
🕒 Weekdays, Sat 8:00 to 19:00; Sun, national holidays 8:00 to 17:30
 P 25 cars 🪑 28 seats

Shops offering sweets and local dishes made with local ingredients!



Japanese confectionery

Plenty of sweet potatoes, a very simple Oni Manju.

Mino Hiroan Mankaido®



☎ 0572-68-3131 📍 2-56 Yakushi-cho
🕒 9:00 to 18:00 P 10 cars
📶 Available



Takoyaki

Flavorful taiyaki and takoyaki made with local ingredients.

Takoyaki Yumita



☎ 090-6353-1185
📍 1095-1 Terakawado-cho (Located in Toriyasu)
 Irregular closing 🕒 11:00 to 20:00
 P 20 cars



Goheimochi

Goheimochi's sauce is exceptional. Taste a freshly baked one.

Goheimochi Amakara



☎ 0572-67-2369 📍 1212 Terakawado-cho
 Monday (Open on public holidays)
🕒 10:00 to 17:00
 P 7 cars 🪑 10 seats



Café (Honey production)

The blessings of local flowers and bees at the honey producer's market.

Hori beekeeper Mitsuya



☎ 0572-56-2228 📍 1-58 Honami
 Wed, irregular closing
🕒 Weekdays 9:00 to 17:00; Sat, Sun, national holidays 9:00 to 18:00
 P 6 cars 🪑 16 seats

Visit these restaurants for Mizunami Buono Pork!!



Snacks

Buono Pork Ham Kobo Mizunami

Offers breakfast and lunch menus made with Mizunami Buono Pork ham, sausages, and local vegetables.



☎ 0572-56-1186 📍 6059 Toki-cho
 Tue, (or the following day if it falls on a national holiday), winter recess 🕒 9:00 to 14:00
 P Available 🪑 15 seats + 8 terrace seats 📶 Available



Japanese

Special Tonkatsu Yuan

Soft and juicy pork katsu made with Mizunami Buono Pork. The signature dish red pork fillet katsu is very popular.



☎ 0572-68-6968 📍 4-33 Yakushi-cho
 Thu
🕒 11:00 to 14:00 and 17:00 to 20:00
 P 34 cars 🪑 70 seats 📶 Available



Barbecue

Yakiniku Yoshida

A hearty yakiniku restaurant loved by locals. Famed for Tsubozuke Ippon-yaki offal.



☎ 0572-68-3660 📍 2-52-2 Taruue-cho
 Wed 🕒 17:00 to 22:00 (Last Order 21:30)
 P 20 cars 🪑 55 seats



Western

Kitchen MAKOTO

Along with more than 500 kinds of cocktails, enjoy a wide variety of dishes such as Grilled Mizunami Buono Pork on rice, pasta, and more.



☎ 0572-67-1108 📍 1F Seiko Heights, 719-1 Yamada-cho
 Sun evening, irregular closing
🕒 12:00 to 14:00 (Last Order 13:30) and 19:00 to 25:00
 P 8 cars 🪑 24 seats 📶 Available



Souvenirs

お土産 陶磁器 Ceramics

Mizunami goods shopping includes Crafts and local vegetables



A new style of traditional craft



Find your favorite ceramic of Mizunami ware

Pottery shop "Chawan-ya Mizunami"

In a warm and nostalgic atmosphere, find new vessels with a modern individuality to traditional pottery.

☎0572-56-0203 📍5-5-1 Uedaira-cho 📅 Wed ⌚10:00 to 17:30 🚗50 cars



美濃焼

Minoyaki

Name of the ceramics produced in the Mino region of Gifu Pref. Typical designs are Oribe, Shino, and Kisetō.



Isola pallet plate

Won the Good Design Award in 2010. A partitioned plate that can be used for various purposes, meals and tea time.

Manufacturer: Miyama Co., Ltd.
☎0572-67-1522



Tsubame Kobo Rock Cup

The intricate beauty of the shape, which is made by pressure casting, is magnificent. Treat yourself at drinking time with a unique sake cup.

Manufacturer: Daikei Ceramic
☎0572-67-1106



Glazed copper plate vessel suun

Using the technique of copperplate underglaze painting, the pottery, glaze, and patterns blend together to create a soft texture.

Manufacturer: Miyama Planning Co., Ltd.
☎0572-68-4562

Visit Sake Breweries Found my favorite sake



Wakaba Co., Ltd.

A sake brewery founded 300 years ago. Main product is a Junmai sake made with locally grown rice. Visit for tasting, shopping and a tour of the sake brewery.

☎0572-68-3168 📍7270-1 Toki-cho
📅 Irregular closing (contact us) ⌚9:00 to 17:00
🚗5 cars



Nakashima Brewery Co., Ltd.

Founded in 1702, the brewery produces about 50 types of sake and liqueurs. Tasting and other paid experiences are available.

☎0572-68-3151 📍7181-1 Toki-cho
📅 Sat, Sun, national holidays, winter recess ⌚8:00 to 17:00
🚗10 cars



Special souvenirs

瑞浪ボノボク Mizunami Buono Pork

This is Mizunami!
A lineup of our gems

After seeing, eating, and playing a lot, go shopping
For family, for friends and for yourself
Please take a gem of Mizunami.



きなはた瑞浪 Farmers market Kinahta Mizunami

The market sells safe and fresh local agricultural products and specialty Mizunami Buono Pork carefully raised by farmers. Some products are available through online shopping.

GO

☎ 0572-26-8617 📍 6059 Toki-cho
🕒 Tue, (or the following day if it falls on a national holiday), winter recess
🕒 9:00 to 18:00 📺 Available
📶 Available



The local experiences are here



Come to BBQ field.



In Kinahta Mizunami



ボノボク ハム工房“瑞浪” Buono Pork Ham Kobo Mizunami

Selling handmade ham and sausages made from Mizunami Buono pork. A café offering breakfast and lunch is attached. Visit the online shop.

GO

☎ 0572-56-1186 📍 6059 Toki-cho
🕒 Tue, (or the following day if it falls on a national holiday), winter recess
🕒 9:00 to 14:00 📺 Available
📶 15 seats + 8 terrace seats 📶 Available



Be in a cheerful mood with sake, toast with craft beer! Get it in Kinahta Mizunami.



Camado Brewery

A craft beer brewery packed with local attractiveness. Join a factory tour.

☎ 0572-51-2620 📍 3154-3 Kamado-cho
🕒 Weekdays 9:00 to 17:00; Sat, Sun 11:00 to 15:00

The local experiences are here



CAMADO BEER BAR HAKOFUNE

A beer bar attached to Camado Brewery. Taste freshly made draft beer 6TAP.

🕒 Mon to Thu
🕒 Fri 18:00 to 22:00; Sat 12:00 to 22:00; Sun 12:00 to 19:00 📺 6 cars 📶 30 seats

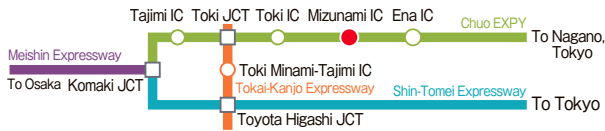
GO



Beyond Mizunami

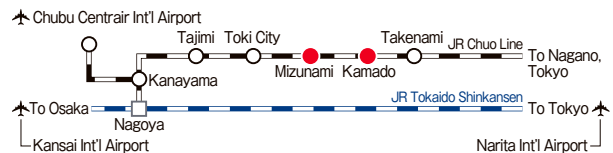


By Car



- Tokyo → Gotemba JCT → Toyota Higashi JCT → Toki JCT → Mizunami IC (approx. 3 h 30 min)
[Tomei Expressway → Shin-Tomei Expressway → Tokai Kanjo Expressway → Chuo Expressway]
- Tokyo → Mizunami IC (about 4 h 30 min) [Chuo Expressway]
- Osaka (Suita IC) → Komaki JCT → Mizunami IC (about 2 h 30 min) [Meishin Expressway → Chuo Expressway]
- Nagoya → Komaki JCT → Mizunami IC (about 40 min) [Tomei Expressway → Chuo Expressway]

By Train



- Tokyo → Nagoya (1h 45 min by Shinkansen)
- Osaka → Nagoya (1h by Shinkansen)
- Chubu Centrair Int'l Airport → Kanayama (30 min by Meitetsu line) → Mizunami (40 min by JR Chuo Line)
- Nagoya → Mizunami (48 min by JR Chuo Line Rapid)

Taxi's in Mizunami

- | | | | |
|--------------------------------|----------------|------------------|----------------|
| ● Totetsu taxi Mizunami center | ☎ 0572-68-2277 | ● Kobayashi taxi | ☎ 0572-68-3311 |
| ● Heiwa taxi | ☎ 0572-68-6111 | ● SKU taxi | ☎ 0572-65-2889 |

Issued by Mizunami City Tourist Information
5-5-1 Uedaira-cho, Mizunami-shi, Gifu 509-6122
1F Mizunami City Industrial Promotion Center
TEL: 0572-51-8161

Mizunami City Tourist Information

Mizunami

<https://www.city.mizunami.lg.jp/>



<https://www.city.mizunami.lg.jp/>



This guidebook is made from raw materials and recycled resources utilizing appropriately managed woods authorized by the Forest Stewardship Council®.